



53210 Thrust ball bearings, single direction

- Popular item

Thrust ball bearings, single direction

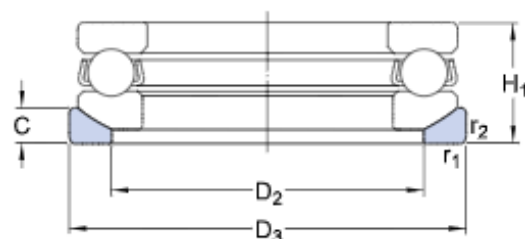
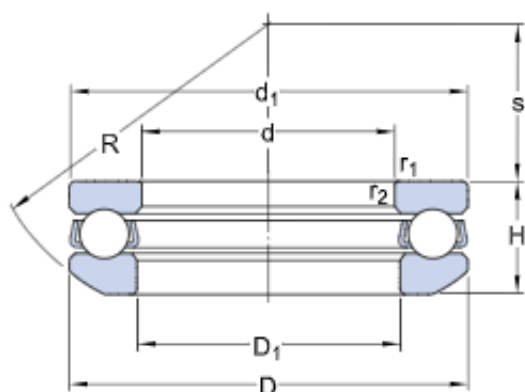
Bearing data

[Tolerances,](#)
table 1

Bearing interfaces

[Seat tolerances for standard](#)
[conditions,](#)
[Tolerances and resultant fit](#)

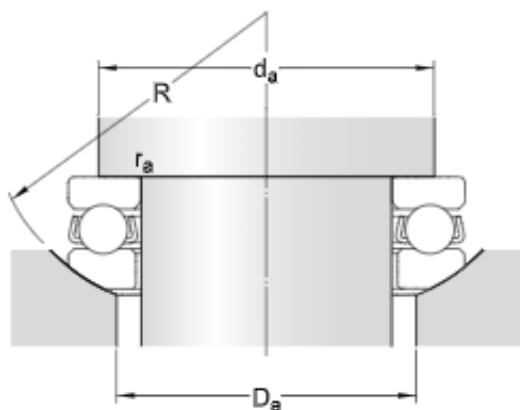
Technical specification



DIMENSIONS

d	50 mm	Bore diameter
D	78 mm	Outside diameter
H	23.5 mm	Height
H ₁	26 mm	Height bearing including seat washer
d ₁	≈ 78 mm	Outside diameter shaft washer
D ₁	≈ 52 mm	Inner diameter housing washer
D ₂	62 mm	Inner diameter sphered seat washer
D ₃	82 mm	Outside diameter sphered housing washer
C	7.5 mm	Height sphered housing washer
R	64 mm	Radius sphered housing washer
s	32.5 mm	Centre height housing washer sphere
r _{1,2}	min. 1 mm	Chamfer dimension washer

ABUTMENT DIMENSIONS



d_a min. 67 mm Abutment diameter shaft

D_a max. 62 mm Abutment diameter housing

r_a max. 1 mm Fillet radius



CALCULATION DATA

C	49.4 kN	Basic dynamic load rating
C_0	116 kN	Basic static load rating
P_u	4.3 kN	Fatigue load limit
	3 200 r/min	Reference speed
	4 500 r/min	Limiting speed
A	0.069	Minimum load factor

MASS

0.47 kg	Mass bearing (including seat washer where applicable)
---------	---

ASSOCIATED PRODUCTS